

# Installation manual

## A1140 three-phase meter WC



### Orsis

Clarendon House  
Victoria Avenue  
Harrogate  
HG1 1JD  
United Kingdom

**General Enquiries**  
info@orsis.co.uk

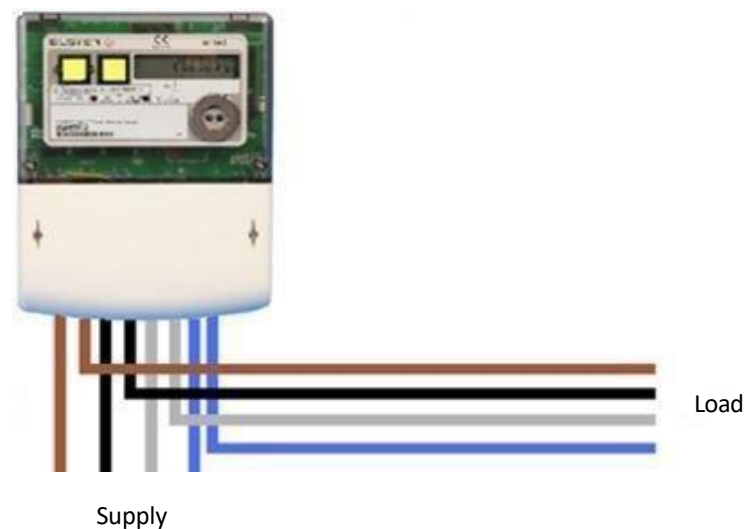
**Sales**  
sales@orsis.co.uk

**Phone**  
01423 530700

Before installing an A1140 meter, Orsis advise carrying out an GPRS connection check.

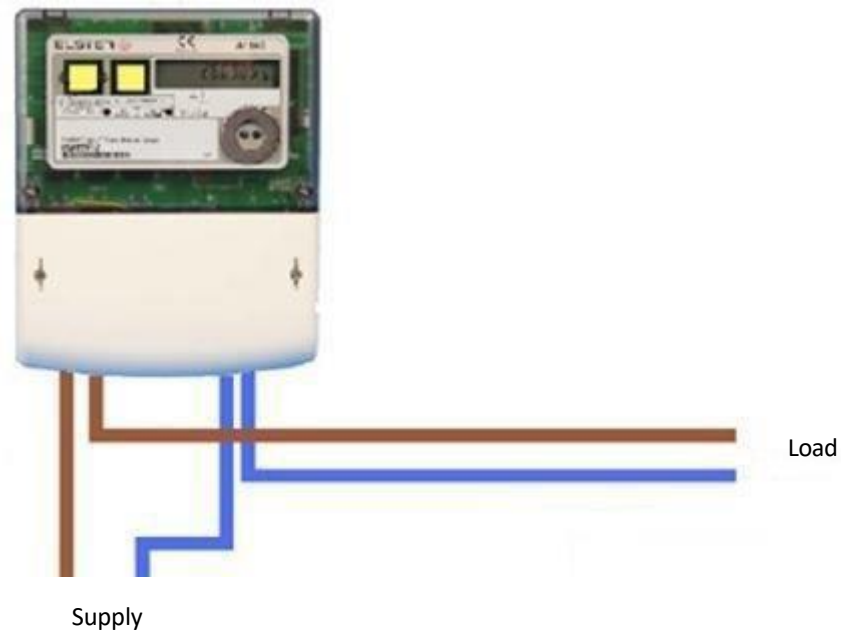
Elster A1140 three-phase whole current meter wiring diagram

Three-phase connection

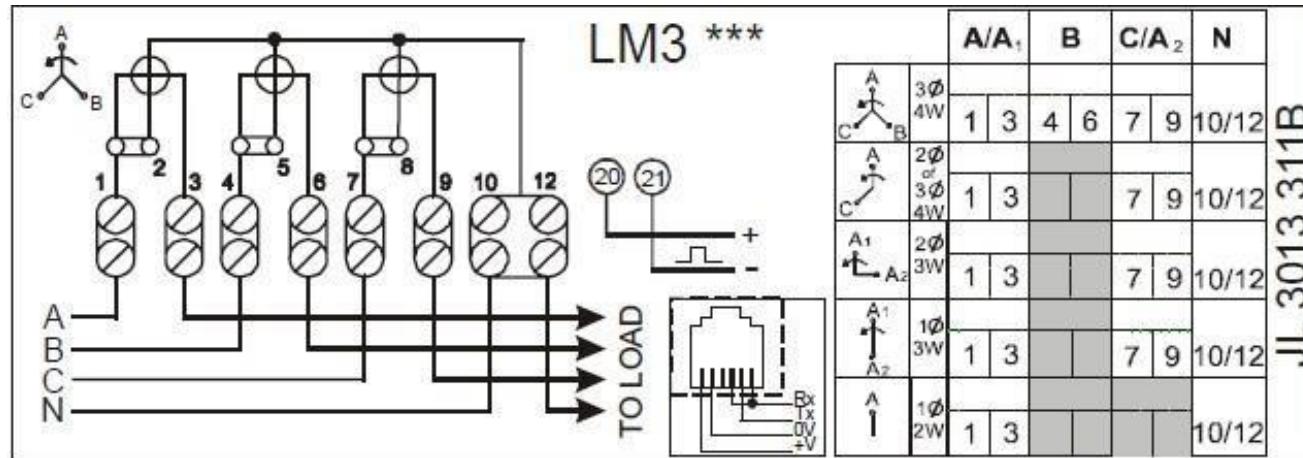


Elster A1140 single-phase whole current meter wiring diagram.

Single-phase connection



## Elster A1140 WC wiring schematic



3 phase 4 wire, Direct connected

## RJ11 socket location



RJ11 Socket

## How to Install the Orsis A1140DC module

Ensure the meter is installed prior to module installation



Remove tails cover



Plug in RJ11 Clip



Fit module on the  
bottom of the meter



Refit new tails cover

## Orsis A1140DC module

### LED Description

There are three LEDs defined as power (PWR), registration status (REG) and error indication (ERR) from left to right on the front of the module as shown below.



LED	Status Description	LED Status
PWR	Normal system power supply	Always On
REG	Registered	Always On
	Not Registered	Always Off
ERR	Flashing errors	See next section for detail definition list



## LED Error Definition List

Flashing Sequence	Error
Always Off	Registered
1 Flash	SIM card requires changing
2 Flashes	Meter not connected to module
3 Flashes	GSM signal strength is too low
4 Flashes	External Flash Read-Write Error
5 Flashes	GSM Module not started
6 Flashes	GSM Module serial communication error
7 Flashes	External EEPROM Read-Write error
8 Flashes	Meter Connection Error ( Failure to get correct data)
9 Flashes	GSM Module Initialisation Failure
10 Flashes	Dialling Failure
11 Flashes	Exceptional Socket Interruption
12 Flashes	Load balance log in error
13 Flashes	Communication sever log in failure
14 Flashes	Registration Failure

Part	Description	Notes
Elster A1140 WC	No display on the meter?	Firstly, check that power is on. If not, switch power on. If power is on and there is still no display then change the meter.
	How often should test display scroll?	Automatic cycling every 4 seconds.
	What should the display sequence be reading?	There should be 2 display readings – Test (all segments of LCD illuminated) Total kWh register (6 digits)

### Commissioning Phase

It is essential that the commissioning engineer contacts the Orsis support team to confirm the communications paths are operational between the Meter and DC module via GPRS **BEFORE** leaving site.

**The metering system will not be deemed operational until Orsis support staff confirm all communications paths are connected.**

**Please phone Orsis Support Team on 01423 537088 to check and confirm the connection.**